

MQSafe

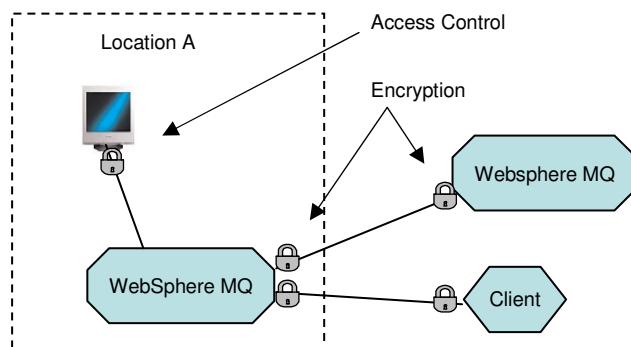
The ITC solution which is the optimal complement of WebSphere MQ®

- Increase the security of WebSphere MQ
- Automation of installation and operation management
- Central management of users and access control

Security

Communication between distributed software applications and external partners requires high and extensive security measures.

WebSphere MQ offers eavesdropping protection, but authentication is limited to a single WebSphere MQ Manager instance. Especially there are some shortcomings concerning the security of remote management of WebSphere MQ Managers.



Benefits of MQSafe

- **Authentication by username and password or by RSA-certificates**
- **Eavesdropping protection and content protection by using established encryption procedures**
- **Limit network access by filtering of IP addresses**
- **Logging of security related events and failures**
- **Modular expandability**
- **Access control of remote management of WebSphere MQ Managers**

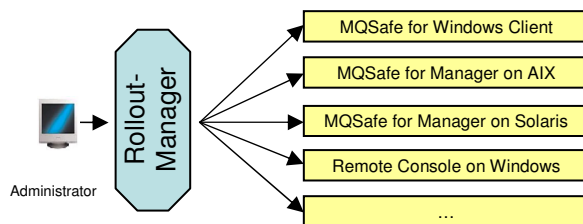
IBM® and WebSphere MQ® are registered trademarks of IBM Corporation

BENEFITS BY INNOVATIVE IDEAS AND INTELLIGENT SYSTEMS

Installation and operation management

Installation procedures and operation management of security related extensions of WebSphere MQ Managers are time consuming. The MQSafe Rollout-Manager offers comprehensive automation in those areas.

The administrator defines users, managers and use cases once only. The Rollout-Manager simplifies the rollout of MQSafe considerably – especially for heterogeneous system environments. The software installation packages, which are created by the Rollout-Manager, are protected against manipulation, so that user handling errors are reduced to a minimum.



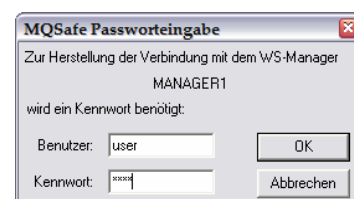
Management of users and access rights

It is a common practice to use a very simple user and rights management with WebSphere MQ Managers, which does not provide a high level of security. Alternatively a secure one can be used, which requires lots of maintenance effort and is very time consuming.

The Rollout-Manager of MQSafe provides a user and rights management, which is easy to handle and enables a high level of security. By using the Rollout-Manager the operating costs might be reduced considerably.

Benefits of MQSafe

- **A Rollout-Manager which creates software installation packages of MQSafe for different computers and use cases automatically**
- **Software installation packages, which are protected against manipulation**
- **Thin client architecture with reduced maintenance effort of certificates, which are used by the clients**
- **Automated setup of MQSafe for WebSphere MQ Managers**



Benefits of MQSafe

- **Central and platform independent management of users and access control**
- **A password dialog can be used by the WebSphere MQ Explorer and other software applications**

BENEFITS BY INNOVATIVE IDEAS AND INTELLIGENT SYSTEMS

Integrated architecture of security

MQSafe offers an integrated architecture of security for WebSphere MQ client applications and WebSphere MQ components:

- WebSphere MQ Queue-Managers (for example connecting two manager instances)
- MQSafe can be used with an existing application by using the optionally available MQSafe-Multiplexer (changing the application is not required)
- Proprietary software applications written in C/C++ and Java can use MQSafe

MQSafe implements an interface, which is provided by WebSphere MQ. It can be integrated into WebSphere MQ Managers or client applications by using it as security-, send- and receive exit program of a WebSphere MQ channel.

Core technologies of the security architecture

- Eavesdropping protection and content protection by using established encryption procedures:
 - Asymmetric encryption algorithm (RSA)
 - Choosable symmetric encryption algorithms (like 3DES, DESX)
 - Signing of messages (optional, using RSA)
 - X509-certificates
- A central user management which is independent from the operating system
- Authentication can be done by using RSA-certificates or username and password
- Management of access rights by using the standard procedures of WebSphere MQ

Licenses

MQSafe is available for the **operating systems** Microsoft Windows, IBM AIX and SUN Solaris (Linux on request).

MQSafe may be used with a client software application with any amount of computers **without any charge**. License fees incur for each instance of a Queue-Manager, which uses MQSafe. The yearly fees for support services are 15% of the license fees.

A corporate license includes the right **to give parts of MQSafe to external partners** for ensuring a secure communication between the partners and the own company.

Every licensee receives the following:

- a full version of MQSafe
- free updates of MQSafe during the validity period of a license
- Online-Support through ITC as long as the license is valid



You may place an order by email at productinfo@itcnet.de or you may ask for a test version with a validity time of 30 days

BENEFITS BY INNOVATIVE IDEAS AND INTELLIGENT SYSTEMS

Other offerings of ITC:

- Integration of MQSafe into existing systems,
- e. g. usage of PKI or LDAP infrastructures
- Consulting concerning security related topics of existing WebSphere MQ infrastructures
- Analysis, conceptual design and implementation of a WebSphere MQ security architecture
- Workshops about data security when using WebSphere MQ
- Individual extensions of MQSafe or development of peer-to-peer security solutions

⇒ **Call +49 6192 9713-0 or write an email to projektservice@itcnet.de for receiving a personal consulting service**

Please pay attention to more of our products and solutions

- sciBRo, a proven foundation for EAI and SOA
- iQ-Mon, a software application for intelligent monitoring of hardware, networks, software applications and business processes
- PCM, a web based solution for problem and change management, which can be integrated into your own website



ITC Information Technology Consulting GmbH

Bachstr. 18 - 20
65830 Kriftel, Germany

Phone: +49 6192 9713-0
Fax: +49 6192 9713-13
Website: www.itcnet.de
Info: productinfo@itcnet.de

ITC is a member of the German Society for Quality



Deutsche Gesellschaft
für Qualität e.V.