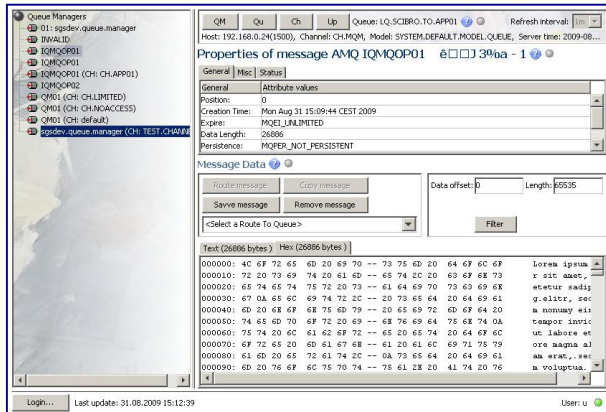


MQ Operator



The smart solution for administrators, support staff and developers in the field of WebSphere MQ¹.

MQ Operator serves visual representation, verification and control of operational message flows.

Especially in critical support situations, MQ Operator provides the essential tools for immediate and reliable analyses and intervention.

Overview

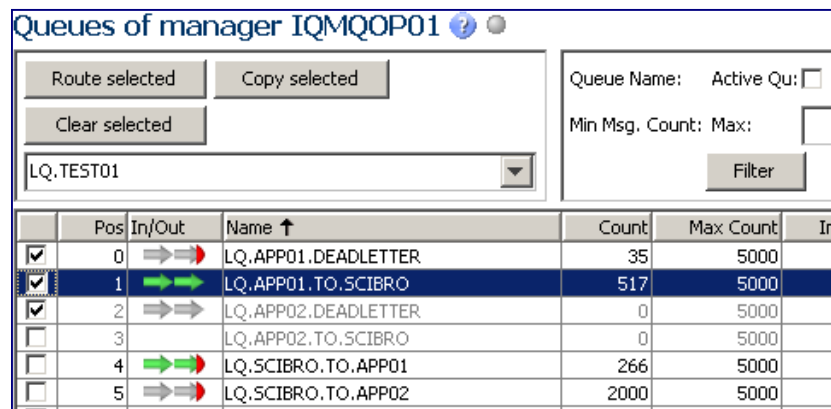
In practice, there is a frequent need to check details about filling level, content and performance of queues, e.g. in order to analyse malfunctions. It often turns out that existing standard tools are not optimally suited for such analyses and essential functions are missing entirely.

Here is where MQ Operator starts. MQ Operator offers the crucial sights, information and functions for real-time analyses.

Functions

Queue Status

Central part of MQ Operator is the display of queue lists including their current status. Intuitive visualisation is a unique feature of MQ Operator. It visualises queue activities with the effect that - on one sight - service interruptions or malfunctions become obvious. Several filtering options may be applied to select the objects to be monitored.

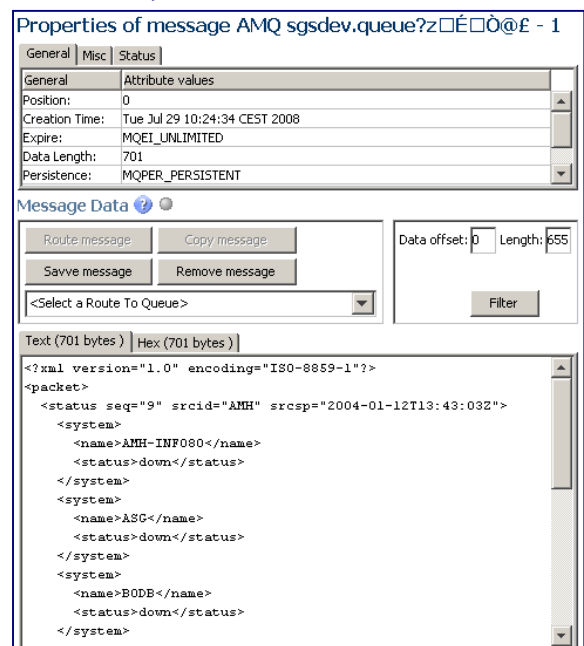


Message View

All messages of a queue can be shown in text as well as in hex format.

Message Functions

MQ Operator lets you save single messages or selections into files. Additionally you can copy or move messages into other queues or delete them.



¹ IBM® and WebSphere MQ® are registered trademarks of IBM Corporation.

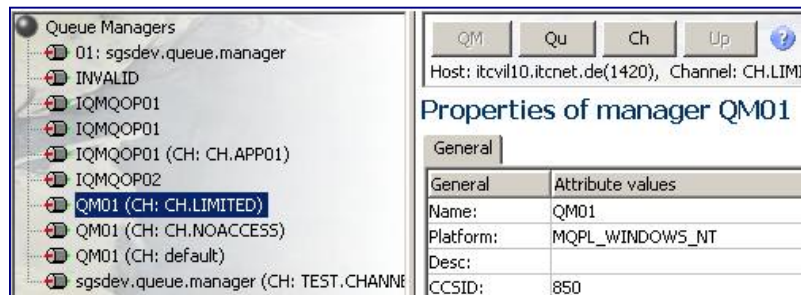
Queue Functions

The function "reverse lookup of alias queues" eases the locating of applications authorised to access a physical queue.

You can link user customisable help pages (Web-URL) on a per queue basis, accessible via the context menu.

Queue Manager Access

MQ Operator permits not just the management of all queue managers of the enterprise, but additionally enables the user to utilise multiple channels into each queue manager using different access permissions.



Channel Control

Via MQ Operators, channels can be started or stopped.

Online Help

The user interface offers a context related help function based on HTML technology.

Technology

Due to the client-server-architecture of MQ Operator and due to the included data compression it is possible to operate the clients via a low bandwidth network. Utilising the secured standard protocol HTTPS for the communication between clients and server there is no need to change the configuration of firewalls.

By using Java (Java Version 5.0 or higher) MQ Operator is applicable on numerous platforms (e.g. Microsoft Windows 7/Vista/XP, Linux, AIX, Solaris) eingesetzt werden.

MQ Operator is easy to install. Authorised users are able to work with it immediately within the network without any further installation - they just connect to the MQ Operator server via their web browser. The MQ Operator client can be started as an applet within the web browser. Alternatively it may be installed on the clients computer automatically by Java Web Start. There is no need for distributed installation of the WebSphere MQ client software due to fact that MQ Operator client is independent from that.

Configuration will be done at the central MQ Operator server (users, configuration of connections to WebSphere MQ, threshold levels of presentation properties, and so forth).

Monitoring

MQ Operator integrates seamlessly into iQ-Mon, the enterprise monitoring solution by ITC.

